

DURKAR MED SOLID TOPP

MATERIALSPECIFIKATION



YDOLWHWVDUDQWL

ZOOYHUNDGLHQQLWPHGYnUWDFNUHGLWHUDGH
 .YDOLWHWVOHQLOQVWVWHPIUGHQVWUXWVHOOD
 LQWHWLVWHWHQRVGHWDQWYQDPDWHULDQHWDPFNHWK
 NYDOLWHW
 QOLYVOIQGSnnUIIYIQWDVPHQDUDQWHUDVLQWH
 RFKDVHUDVSnHWWQDQDOYDULDEOHUPLOM|
 LQVWDOODWLRQVSURFHVVGHUKOOEHODVWQLORFK
 WUDILNIPKQOODQGHQEGVSHFLILNDLQVWDOODWLRQHUNDQHQ
 EHWGOLWVHOLYVOIQGDUDQWHUDV



%ULWNVVQGDUG

Safeclamp® DQGUBLOKDUWVHOLPFNNAUGD
 UBRFKIQLW RGNIQDPBGIONVROVRFK
 ODVWVHOLDS 7818: 1995 Class 2A. (QNRSLDSn
 FHWLNDWQYLVVYLIUUnDQ

nYLNWRFKWVWnOLJ

/VWQVSRUWVDOVYnUnWRPOLDSODVH
 6DIFODPSSIFSRQEQMOLRFKKDUIUPFNW/
 VNOYLYLONFLQVNDUULVNBIPUSHPDQEWVNDGRU
 RFGHRUPDVRQ6DIFODPSSIFLUNDOIWUHQ
 BPRWYDUDQGEVQLOQDULDOYDQLVHDVWQ

UVWDELO

QOD6DIFODPSSIRPSRQEQWVOYHNDVPBQKJ
 NYDOLWV89KIPPDUHJDKLQGDUIIUOH
 PDWLDQOBEUOLQJ



.HPLNDOLHUHVLVWDQV

SIUHVLVVHQWPRWHWWEUHWVSHNWURDYNHPLNDOLHU
 YHUHWWEUHWVHPSHWDWVSHNWURSDQWLOOYHUNDV
 PHGMIOSDYROLNDUWVWVWHPIUDWVSSQnVSHFLILND
 NHPLVNDUHVLVVHQWWDH#QVNDSHUB
 NHPLNDOLHEHVVIQGLWVWGLWDPB



WQGVNGG

QODYnUDSURGMWHLQOQKOOHUHWWEUDQGRPDQGH
 DGGWLRYRFKSIOOHUKR.ODVVRFBU
 OLNUIUGLWQKODVVRFBHOFODVV
 IODPPVSULGLOQWJDDWVWHQPLQW/HUVEULQQLG

SLPQWLOJ

QOD6DIFODPSSIRPSRQEQWVUSLPQWLDGH
 BRPKBDPDWLDORFKNUIYHLOQWHRQ
 VNGIUEKQDQGOLOVnVRPPnOQLOHOB
 URVWNGVEKQDQGOLOQSDMVRUIUPLQUMQOLD
 RFKMMDVNDGRUIUOITWVSDUHD9nU
 VQGDUGIIUW6INBKMWPBILQQVIYBVRP
 6WnYLGEWDO

FÖR MER INFO

Email: info@decksafe.se

Besök: www.decksafe.se

V1-19.09.2020



DURKAR MED SOLID TOPP

Load and Deflection Data

Moulded Solid Top Grating			Unsupported Span (unfixed) over 1m width						
Thickness	Weight kg/m ²	Load Type	300	500	600	750	1000	1200	1500
29	18	Point Load	8425	3025	2095	1335	740	505	315
		UDL	13485	4850	3360	2145	1195	825	515
42	24	Point Load	22975	8260	5730	3660	2045	1410	890
		UDL	36765	13225	9180	5865	3290	2275	1440
54	28	Point Load	33745	12140	8420	5380	3015	2080	1315
		UDL	53995	19430	13485	8620	4835	3345	2125

Moulded Sandwich Plate Grating			Unsupported Span (unfixed) over 1m width						
Thickness	Weight kg/m ²	Load Type	300	500	600	750	1000	1200	1500
18	13.8	Point Load	3945	1415	980	620	340	230	140
		UDL	6315	2270	1570	1000	555	380	235
46	31.5	Point Load	22975	8260	5730	3660	2045	1410	890
		UDL	36765	13225	9180	5865	3290	2275	1440

FÖR MER INFO
Email: info@decksafe.se

Besök: www.decksafe.se

V1-19.09.2020



DURKAR MED SOLID TOPP

Manufacturing Tolerances

Standard Panel Size	+2mm -0mm
Cut Panel Size	+ 2mm -2mm
Thickness	+1mm -1mm
Mesh Pattern	0.5mm -0.5mm

GRP Characteristics	Unit	Reference
Voltage breakdown	18K volts/mm	ASTM D149
Density kg/m ³	2100	BS 476
Thermal Expansion Factor	13 x 10 ⁻⁶ mm/mm°C	
Water Absorption rate	0.45 x 24 hrs	ASTM D570
Operating Temperature	-100°C to +200°C	BS 476

FÖR MER INFO
 Email: info@decksafe.se

Besök: www.decksafe.se

V1-19.09.2020

DURKAR MED SOLID TOPP

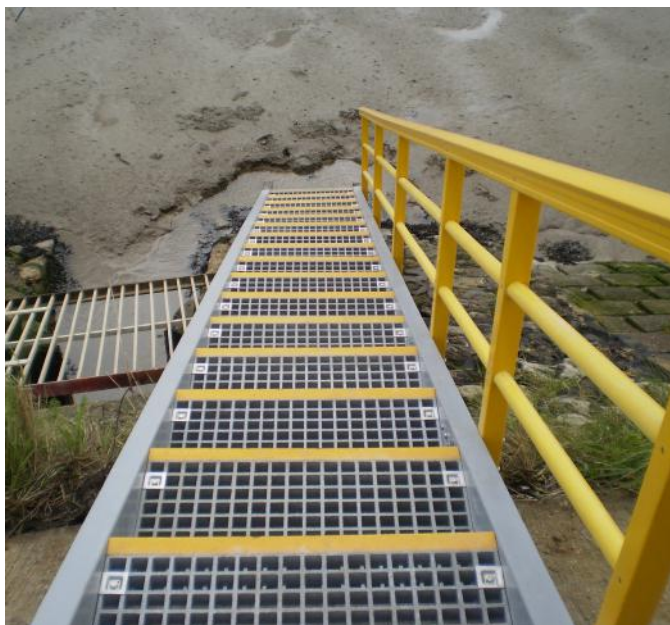
Related Products



Handrail



Grating



Stairs



Access Ladders

FÖR MER INFO

Email: info@decksafe.se

Besök: www.decksafe.se

V1-19.09.2020

